

T2

Farm 17234

Tract 14870

2023 Program Year

Map Created August 24, 2023



1554428






Unless otherwise noted:

- Shares are 100% operator
- Crops are non-irrigated
- Corn = yellow for grain
- Soybeans = common soybeans for grain
- Wheat = HRS, HRW = Grain
- Sunflower = Oil, Non-Oil = Grain
- Oats and Barley = Spring for grain
- Rye = for grain
- Peas = process
- Alfalfa, Mixed Forage AGM, GMA, IGS = for forage
- Beans = Dry Edible
- NAG = for GZ
- Canola = Spring for seed

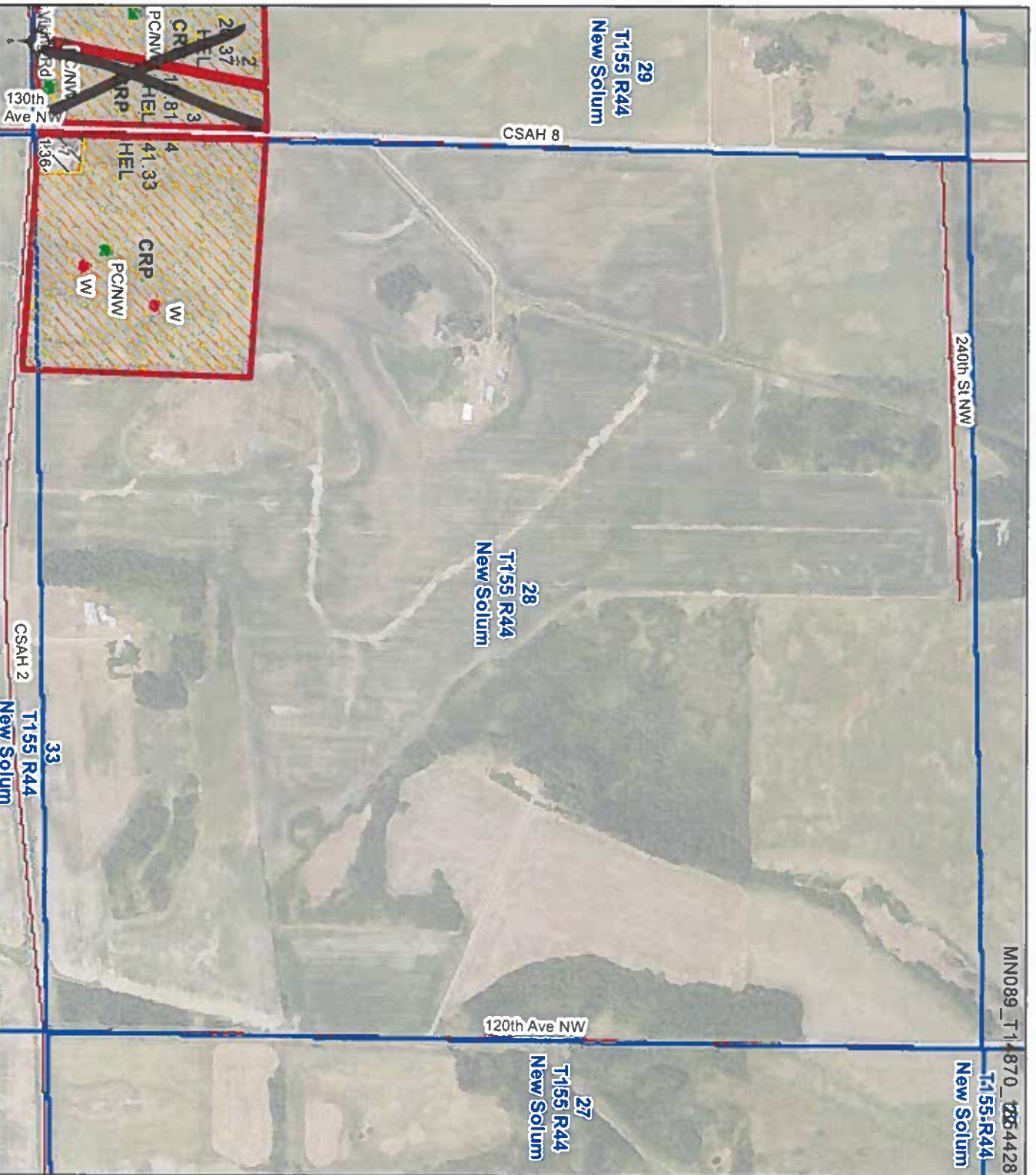
Common Land Unit

-  Non-Cropland
-  Cropland
-  CRP
-  Tract Boundary

Wetland Determination Identifiers

-  Restricted Use
-  Limited Restrictions
-  Exempt from Conservation Compliance Provisions

Tract Cropland Total: 72.51 acres



United States Department of Agriculture (USDA) Farm Service Agency (FSA) maps are for FSA Program administration only. This map does not represent a legal survey or reflect actual ownership; rather it depicts the information provided directly from the producer and/or National Agricultural Imagery Program (NAIP) imagery. The producer accepts the data as is and assumes all risks associated with its use. USDA-FSA assumes no responsibility for actual or consequential damage incurred as a result of any user's reliance on this data outside FSA Programs. Wetland identifiers do not represent the size, shape, or specific determination of the area. Refer to your original determination (CPA-026 and attached maps) for exact boundaries and determinations or contact USDA Natural Resources Conservation Service (NRCS). This map displays the 2021 NAIP imagery.